

TECHNICAL SPECIFICATIONS

Parameters / Model	Series - 350		
	37EDT7	33EDT7	36EDT7
SUPPLY CHARACTERISTICS			
Nominal Supply (ㄗ)	240 V AC	110 V AC	24 V AC/DC
Supply Variation	-20% to +10%		
Supply Frequency	50 / 60 Hz		
Power Consumption (Max.)	15VA		
OUTPUT CHARACTERISTICS			
Output	1 INST C/O (SPDT) + 2 DLYD C/O (DPDT)		
Contact Rating (Max.)	5A (Resistive), 240 V AC / 28 V DC		
Contact Material	AgCdO		
Switching Frequency (Max.)	1000 Operations per Hr		
Electrical Life Expectancy (@ rated max load)	1 x 10 ⁵ Operations (Resistive)		
Mechanical Life Expectancy (@ no load)	5 x 10 ⁶ Operations		
FEATURE CHARACTERISTICS			
Mode of Operation (Selectable)	On Delay / Retentive On Delay (Selectable)		
Ranges	3S, 30S, 3M, 30M, 3H, 30H		
Adjustable Range	10% to 100% of Set Range		
Setting Accuracy	+ / - 5 % w.r.t. full scale		
Repeat Accuracy	+ / - 1 %		
Variation in timing due to voltage change	+ / - 2 %		
Variation in timing due to temperature change	+ / - 5 %		
Operating Temperature	-10°C To + 55°C		
Storage Temperature	-25°C To + 70°C		
Terminal capacity	2.5 mm ² (Max.)		
Indication	Green LED - Power ON Red LED - Relay ON		
Mounting	Base / DIN Rail (35 mm Symmetrical)		
Dimensions (W X H X D)	36 X 67 X 90 mm		
Weight (Unpacked)	135 gms. (appx.)		

SERIES - 350 MICON ELECTRONIC TIMER

Cat. Nos.:

37EDT7

33EDT7

36EDT7

WARRANTY

1) 12 Months from the date of purchase or 15 months from the date of despatch from the factory. 2) The warranty will be fulfilled either by repair or replacement of defective parts at our option. 3) The warranty covers faults arising out of manufacturing defects only. 4) The warranty does not apply to the parts subject to wear nor to defects caused by improper use or incorrect maintenance.

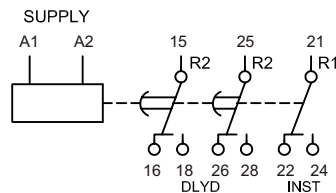
NOTE : The technical information provided in this document is correct at the time of going to the press. We reserve the right to make any alteration without prior notice.

Series 2M MICON ELECTRONIC TIMER is manufactured to a high precision and accuracy giving 3 basic models.

Main features are :

- Multi Function : On Delay / Retentive On Delay (Selectable)
- Multi Range
3S, 30S, 3M, 30M, 3H, 30H
- Compact Dimensions
- Base or DIN Rail mounting

Connection Diagram :



Note :

1. Changing Range Preset in Power ON condition will have no effect.
2. Changing Timing Preset during Power ON condition will reset elapsed time & the new time will be set.

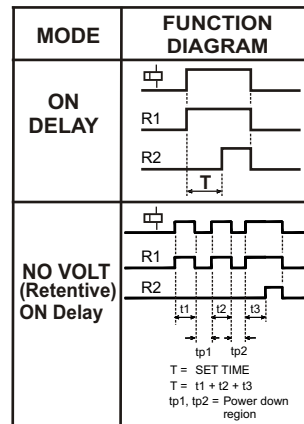
Function Description :

On Delay : When supply is given, timer period commences. The output relay energizes at the end of the pre-set time.

Retentive On Delay : When supply is given, timer period commences. The output relay energizes at the end of the pre-set time.

If power fails during set time, elapsed time will be retained by timer (timer will not reset its time) and after resumption of power remainder cycle will continue. Retention of time will be followed by timer for any no. of failures of power timer till set time is completed.

Function Diagram :



Installation :

- a) Base Mounting : The Timer should be mounted on a plain surface by pulling outward the two existing DIN rail clips & using two M4 screws . (Refer Fig. 1-a)
- b) DIN -Rail Mounting : The Timer should be mounted on a 35 mm symmetrical DIN Rail. (Refer Fig. 1-b)

Overall And Mounting Dimensions

Note : All dimensions are in 'mm'.

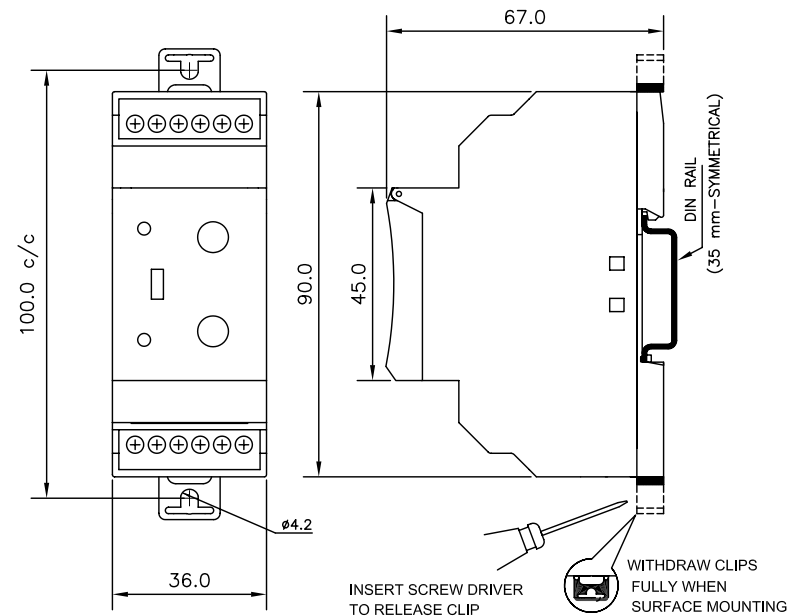


Fig. 1-a

Fig. 1-b